



Statistical profile - Israel

This profile is an extract from the database fed by the regular statistical data exchanges between the Mediterranean partner countries and Eurostat within the framework of MEDSTAT II.

This data exchange covers the following sectors:

Agriculture, External Trade of goods and services, National Accounts, Energy, Environment, Social Statistics, Tourism, Transport.

All the data sources used are national. The collected data were submitted to quality controls at both country and MEDSTAT II levels. Methodologies are comparable with the European standards.

More detailed statistics are available in the New Cronos and Comext databases from Eurostat and in the statistical databases of each Mediterranean partner country.

The methodologies used for the production of these different figures can be found in the "Euro-Mediterranean Statistics" publications which are available on the website of the program to the following address: <http://ec.europa.eu/eurostat/medstat>, section publications/documentation.

Socio-economic context

Population and demography 2007

Population on 1 January

Total Thousand	Male	Female	0-14 years	15-64 years	65 years and +
7 117	49.4%	50.6%	28.4%	61.8%	9.9%

Population density	311 Inhab. / Km ²
Population Growth Rate (2000-2007)	:
Life expectancy at birth	:
Infant Mortality Rate (2006)	4.0
Total Fertility Rate (2006)	2.88

Labour market 2007

Economic Activity Rate for people aged 15-64

Male	Female	Total
68.0%	59.4%	63.7%

Unemployment Rate

15-64 years	15-24 years
7.4%	16.1%

Employment by economic activity

15 years and + Thousand	Agriculture	Industry	Construction	Services
2 682	1.6%	16.5%	5.7%	76.2%

Education 2007

Adult Literacy Rate	Youth Literacy Rate	Net Enrolment Rate at ISCED* 1	Net Enrolment Rate at ISCED* 2
97.5%	99.6%	93.2%	65.3%

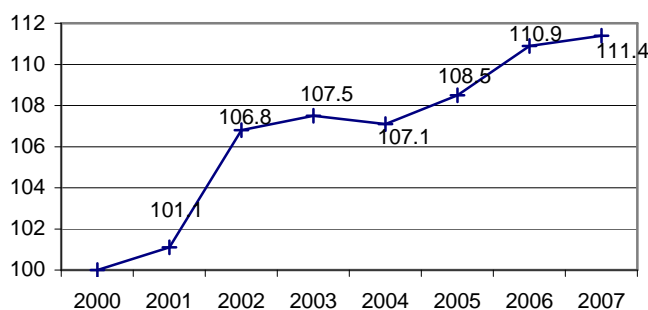
*ISCED: International Standard Classification of Education



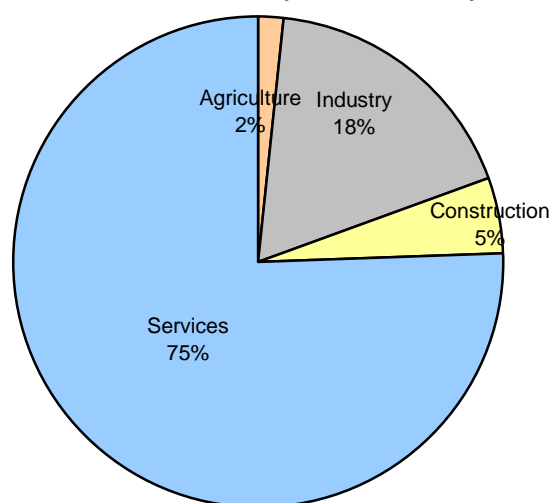
National Accounts 2007

GDP at current market prices Millions €	Gross Domestic Product (GDP) by type of expenditure				
	Final Consumption Expenditure of Households & NPISHs	Final Consumption Expenditure of General Government	Gross Fixed Capital Formation	Imports of goods & services	Exports of goods & services
119 757	56.4%	25.2%	18.7%	44.9%	43.2%
GDP per capita at current market prices		16 679 €			
Annual growth rate of GDP in volume (2000-2007)		:			
Gross external debt, as a share of GDP		53.5%			

**Consumer Price Index
2000 = 100**



Gross Value added by economic activity



External Trade 2007

	Imports		Exports	
	Value Millions €	Share EU %	Value Millions €	Share EU %
Foods, drinks and tobacco (SITC* 0+1)	2 128	42.8%	1 053	69.7%
Raw materials (SITC 2+4)	951	37.8%	514	54.4%
Mineral fuels, lubricant and related materials (SITC 3)	6 513	5.8%	60	50.6%
Chemicals and related products (SITC 5)	4 429	51.6%	5 942	31.4%
Other manufactured products (SITC 6+8)	15 177	40.2%	18 485	24.9%
Machinery and transport equipment (SITC 7)	11 774	41.9%	5 681	27.9%
Goods not classified by kind (SITC 9)	340	38.0%	7 734	33.4%
TOTAL	41 313	36.5%	39 468	29.6%

*SITC: Standard International Trade Classification

Services - Balance of Payments

Millions €	2000			2007		
	Credit	Debit	Net	Credit	Debit	Net
Services	16 385	12 661	3 723	15 430	13 034	2 396
Of which: Transportation	2 639	4 487	-1 848	3 280	4 248	-968
Travel	4 375	2 982	1 393	2 234	2 381	-147
Direct Investment Abroad			-3 528			-5 147
Direct Investment in the reporting economy			5 604			7 059

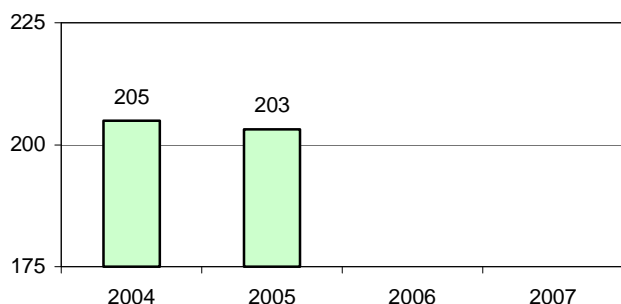


Energy balance 2005

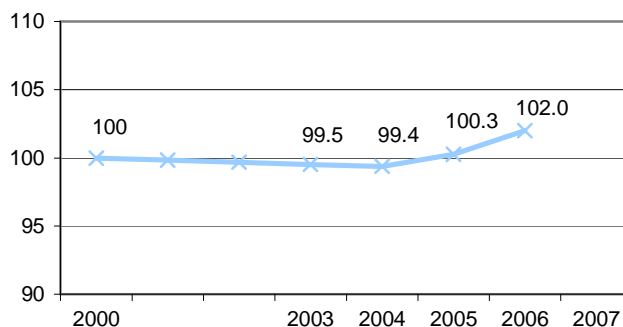
Production and Consumption Thousands of Tonnes Oil Equivalent	Coal	Crude oil and petroleum products	Natural gas	Renewable energy		Electricity	Total
				Hydro- electricity	Other renewable energy		
Primary production	43	2	1 681	:	724	:	2 450
Imports	8 036	15 743	:	:	:	:	23 778
Exports	:	3 867	:	:	:	143	4 011
Gross inland consumption	8 168	11 321	1 681	:	724	-143	21 752
Transformation input	7 991	13 260	1 658	:	:	:	22 910
Transformation output	:	11 785	:	:	:	4 286	16 091
Final energy consumption	:	7 199	23	:	724	3 297	11 264

Environment 2006

Energetic intensity of the economy
Kg Oil Equivalent / 1 000 €



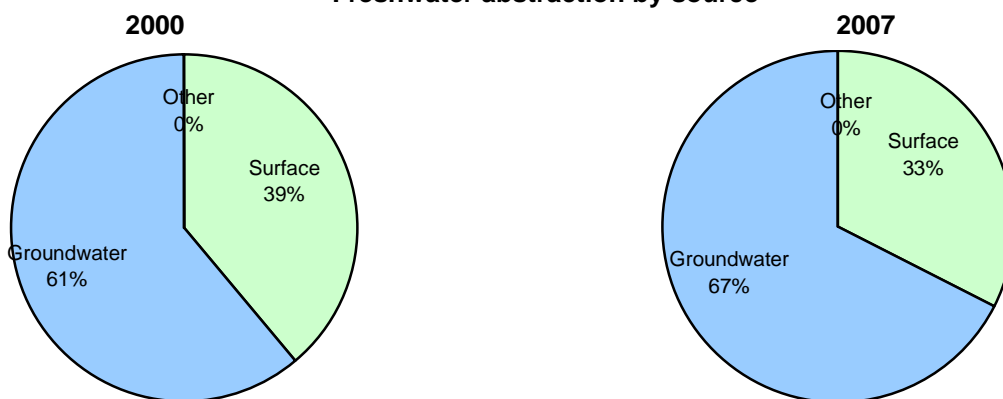
Greenhouse gases (GHG) emissions
Indices 2000=100



Total GHG emissions	73 894 Tonnes Eq. CO₂
GHG emissions per capita	1 135 Tonnes Eq. CO₂/Inhab.
Exploitation indices of the renewable freshwater resources	
1996	:
2006	:
Share of non-treated wastewater	:

Population supplied with water	100.0%
Population connected to wastewater	100.0%
Municipal waste generated	594 Kg/Inhab.
Share of threatened species	:
Share of protected territory (2002)	19.8 %

Freshwater abstraction by source



* Other: Desalinated water
2000: 13 322 thousands of m³ 2007: : thousands of m³



Transport 2007

Road		Rail		Maritime		Air	
Length of road network	17 870 Km	Length of rail network	913 Km	Number of principal ports	4	Number of principal airports	1
Of which: motorways	344 Km						
Total number of road motor vehicles	2 284	Total passenger traffic	31 791	Number of passengers	275	Total number of passengers	:
Thousands		Thousands		Thousands		Thousands	
Of which: Number of road goods vehicles	409	Total freight traffic	7 929	Volume of freight	53 167	Volume of freight and mail	349
Thousands of tonnes		Thousands of tonnes		Thousands of tonnes		Thousands of tonnes	

Tourism 2007

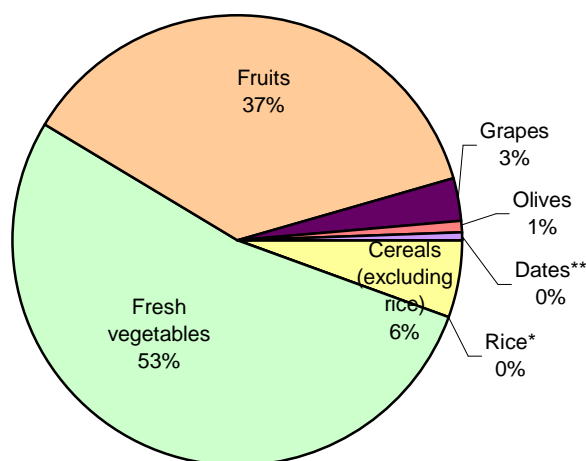
Volume – of which share of EU-27				Capacity	
Annual tourist arrivals at border	Departures of residents going abroad	Nights spent by non-residents at hotels	Nights spent by residents at hotels	Number of hotels and similar accommodation establishments	Number of bed-places in hotels and similar
2 067 700 (43.6%)	4 147 000	8 405 900 (37.6%)	12 072 700	331	116 000

Agriculture and fisheries 2007

Structural information			Animal production Thousands of tonnes		
Total utilised agricultural area Thousands of hectares (2006)	Of which: Total irrigated agricultural land Thousands of hectares (2000)	Number of agricultural holdings	Bovines	Sheep and goats	Poultry
285 100	193 384	:	105 200	30 000	3 650

Crop production

Total production
3 648 Thousands of tonnes



* Rice: 0 tonnes
** Dates: 17 377 tonnes

Fisheries Tonnes			Economic Accounts for Agriculture Millions €	
Annual catches Live weight in tonnes	Of which: Mediterranean and Black sea	Aquaculture	Total agricultural output at basic current prices	Total intermediate consumption
3 385	2 545	22 260	4 030	2 297